

General Equipment Info

Year

Make

Terex

Model

TS14

Hours

1,916

Serial Number

50746

Machine Options

Cab, Heat

Address

City

Huntley

Province/State

Montana

Inspector Name

Adam Dow

Date of Inspection

07-16-2024

Hour Meter - Idle Hours

Serial Number Plate

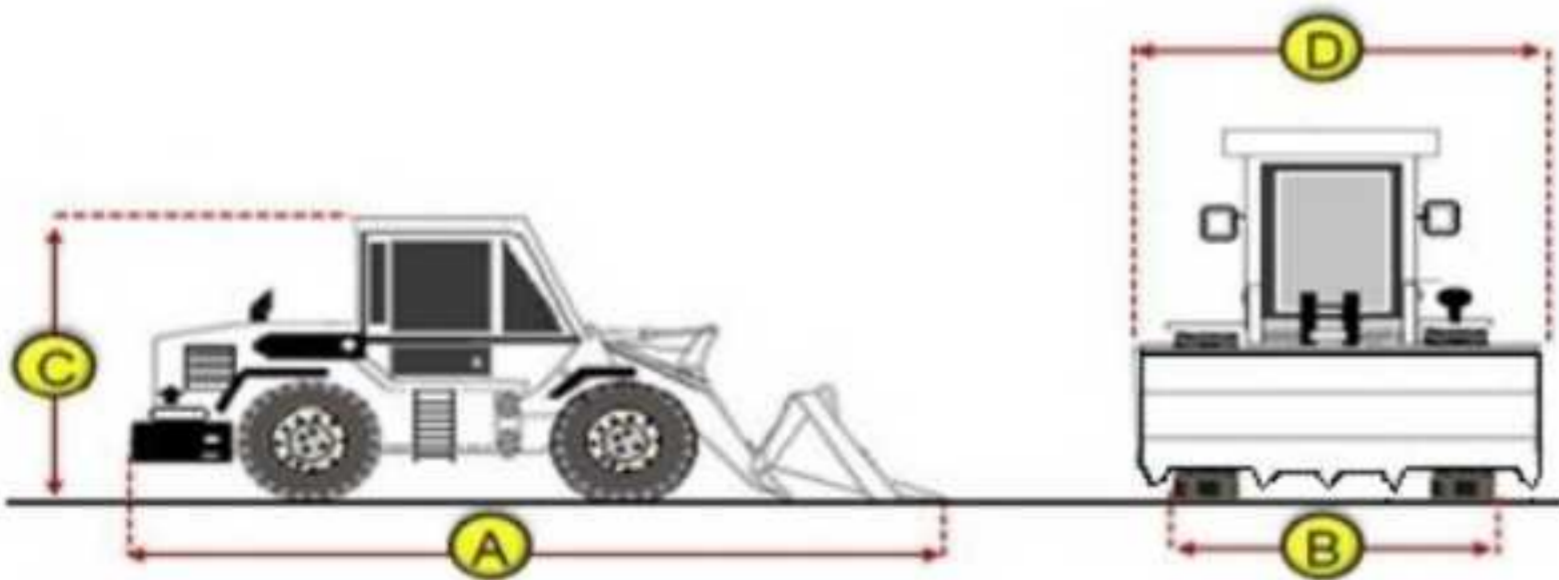


Hour Meter - SMU Hours



Dimensions

Measurement Guide



A. Length (ft and inches)

40' 6"

B. Width (ft and inches)

10' 6"

C. Height (ft and inches)

D. Shipping Width (ft and inches)

11' 6"

Operational Weight (lbs)

Exterior Condition

Coupler Style

Exterior Walkaround Photos

Coupler Brand

Coupler Width (Between bucket ears)

Stick Width (Between bucket ears)

Pin Size

Center to Center of Bucket Pins

Excavator Boom Length

Loader Bucket Pin Height

Width Between Bucket Ears

Top Pin Size

Bottom Pin Size

Center to Center of Coupler Pins





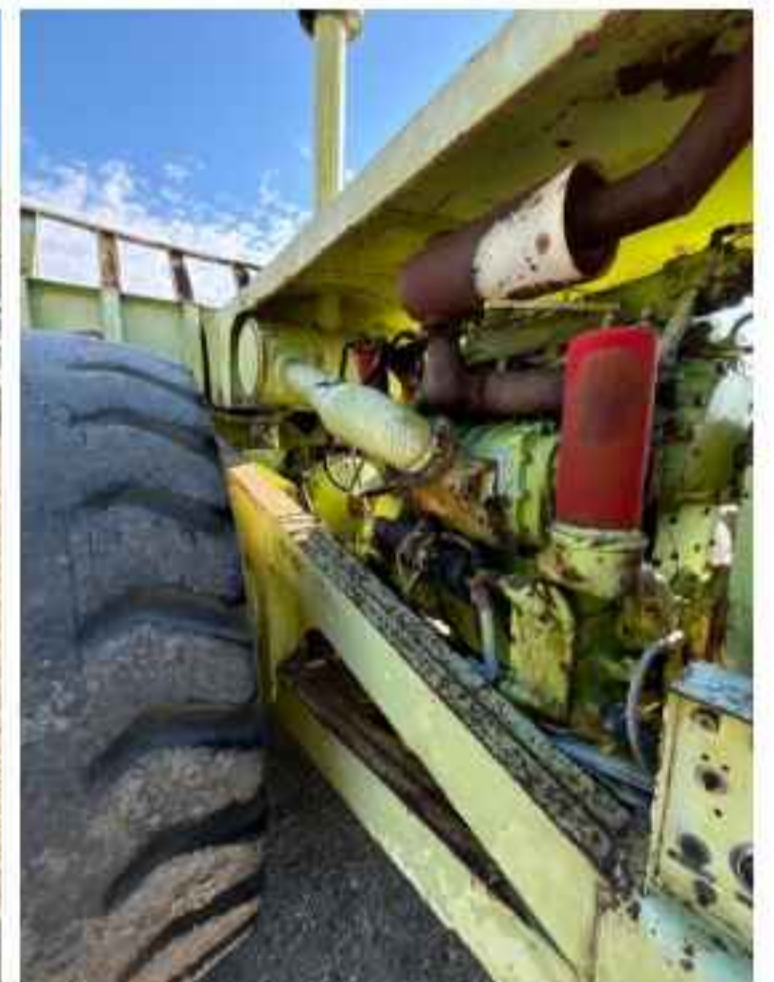


Coupler Photos

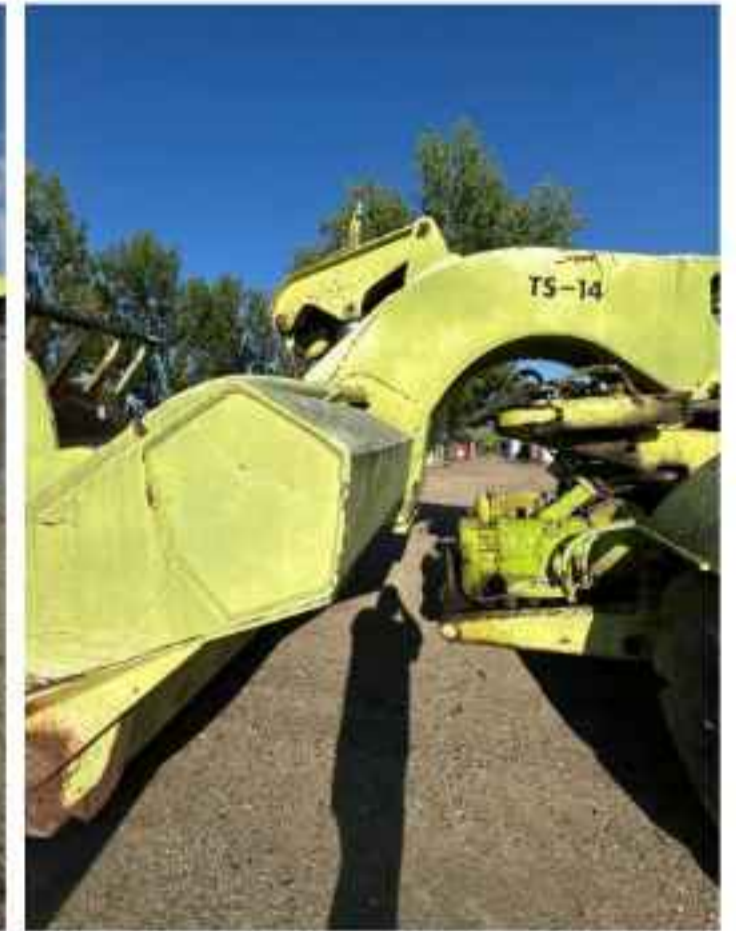
Hard Bar Photos

Close-up Exterior Photos









Chassis Photos



Undercarriage Condition

Undercarriage Type

Wheels

Tire Size

29.5-25

Tire Brand

Fire stone

Front Left Tire - Ratio Remaining

10%

Rear Left Tire - Ratio Remaining

10%

Front Right Tire - Ratio Remaining

10%

Rear Right Tire - Ratio Remaining

10%

Wheel and Tire Condition

Heavy wear, cuts, or weather cracking

Left Track - Ratio Remaining

Right Track - Ratio Remaining

Track Condition

Pad Width Instructions

Take photo of tape measure on pad/grousers

Front Left Tire - Photos



Rear Left Tire - Photos



Front Right Tire - Photos



Rear Right Tire - Photos



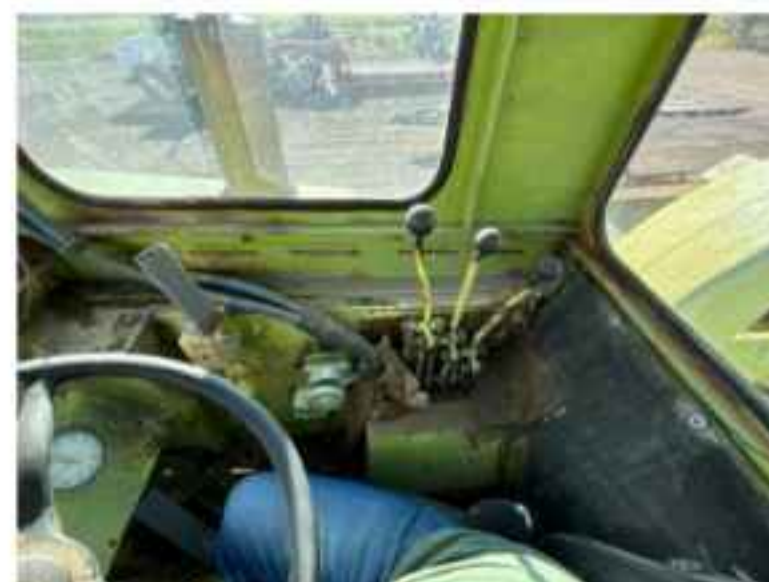
Left Track - Photos

Right Track - Photos

Pad Width Photo

Interior Condition

Interior Condition





Engine Condition

Engine Info

Gather general engine information if available (i.e., Make, Model, Cylinders, type, Horsepower).

Emissions Tier

Engine Serial Number

Unusual Noises (Upon Start-up, Idle, Shutdown)

No

Engine Exhaust Color

Black

Engine Type (Make, Model, Cylinders, HP)

Blow-by (Visual Observation Check)

No

Engine Smoke (Upon Start-up, Idle, Shutdown)

No

Engine Compartment Photos



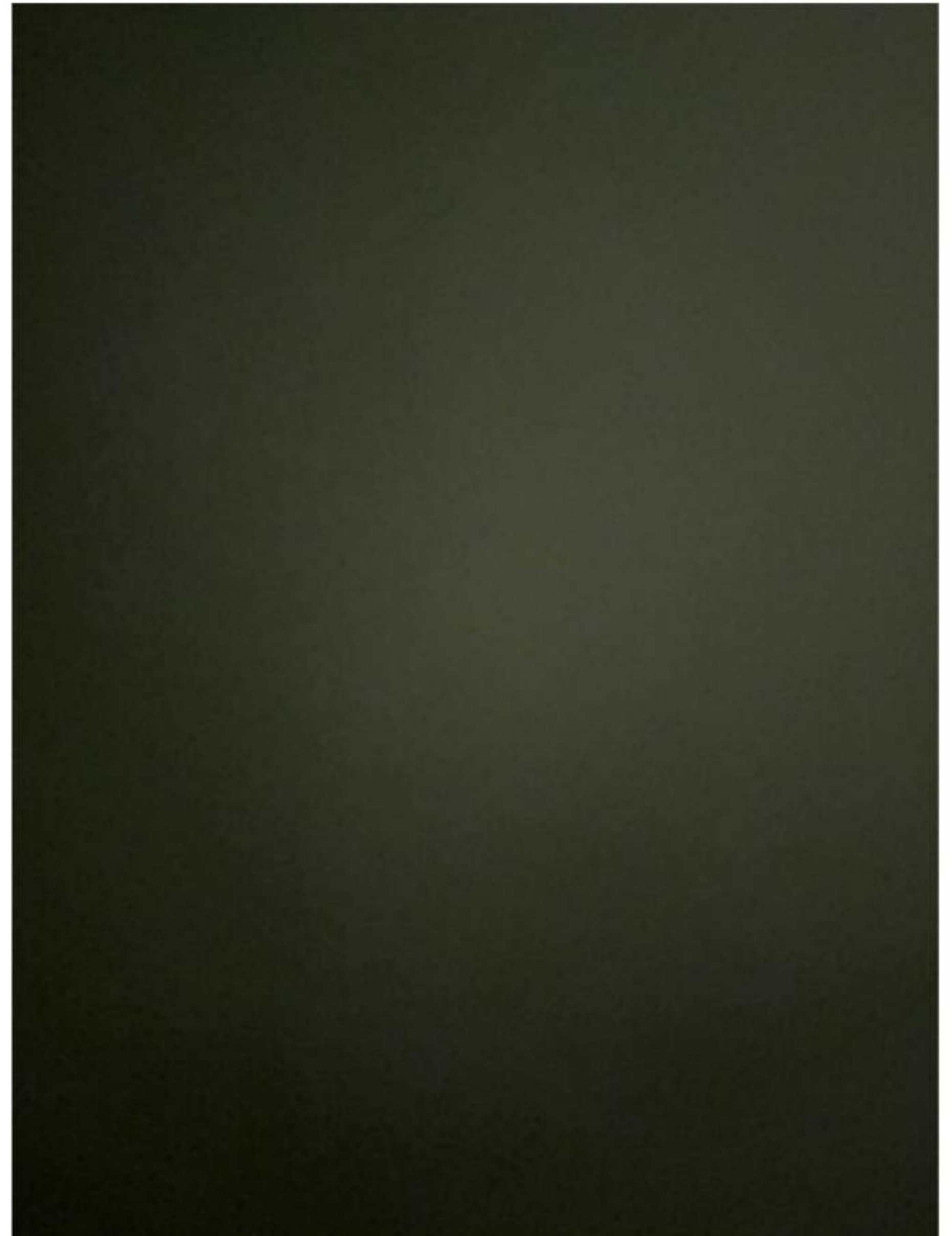
Active Engine Codes

A/C Compressor

Engine Data Plate



EPA Label



Hydraulic System

Hydraulic Pumps / Motors Condition

Hydraulic pumps & motors are dry and in good condition

Hydraulic Cylinder Photos

Hydraulic Lines/Fittings Condition

Cracking, stiff, or charred hydraulic hoses

Hydraulic Cylinders Condition

Hydraulic cylinders are clean and in good condition



Hydraulic System Photos





Hydraulic Leaks Photos



Drivetrain

Hydrostatic Transmission?

Yes

2 Speed?

Yes

Drive

Transmission Condition

Good forward and reverse function

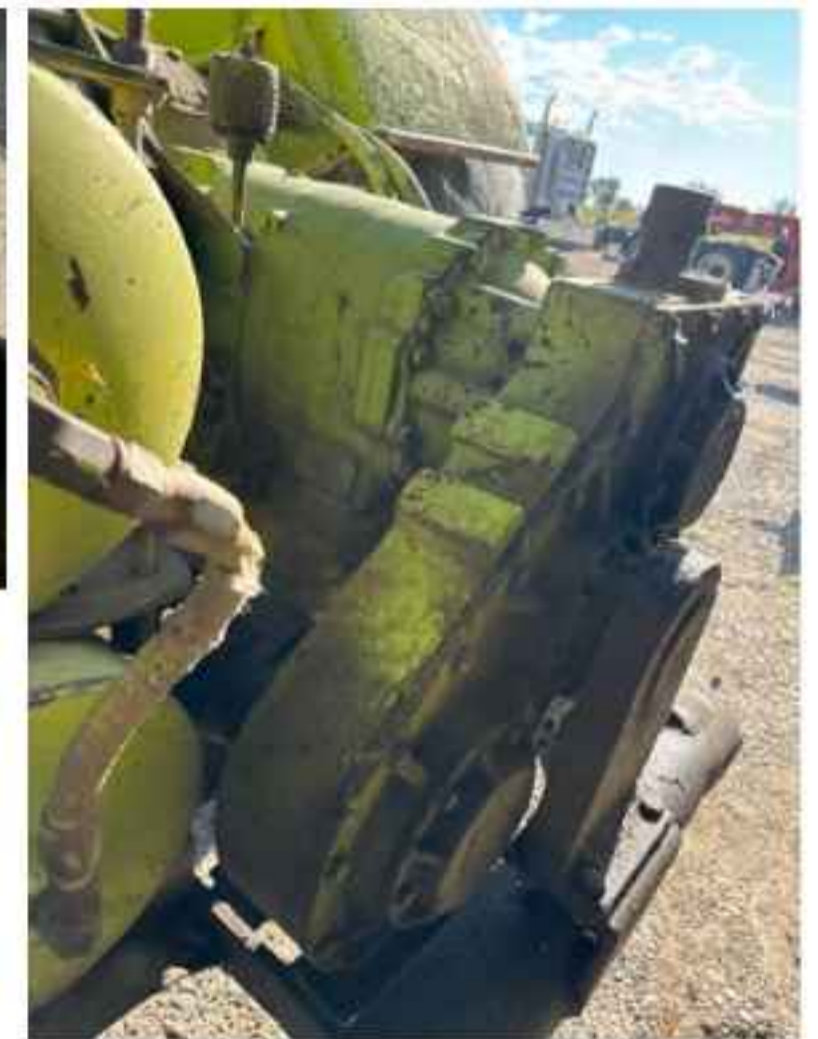
Axle Condition

No leaks, unusual noises or vibrations

Parking Brake Function

Unable to test

Drivetrain Photos







Function Check

Hydraulic Operation

5

Service Brakes Operation

5

Electronics Operation

1

Forward / Reverse

5

Attachment Operation

5

Park Brake Operation

1

Attachments

Attachment Type

Attachment Make

Attachment Size / Specs

Attachment Serial Number

Attachment Photos

Attachment Serial Number Photo

Attachment Width Photo