

General Equipment Info

Year

2019

Make

Volvo

Model

EC300EL

Hours

3,206

Serial Number

VCEC300EA00314075

Machine Options

Cab, Heat, A/C, Aux. Hydraulics, Quick Coupler, Ripper, Digging Bucket, Cleanup Bucket, Backup Camera

Address

City

Stoughton

Province/State

Sk

Inspector Name

Ryan

Date of Inspection

07-08-2024

Hour Meter - Idle Hours

Serial Number Plate



Hour Meter - SMU Hours



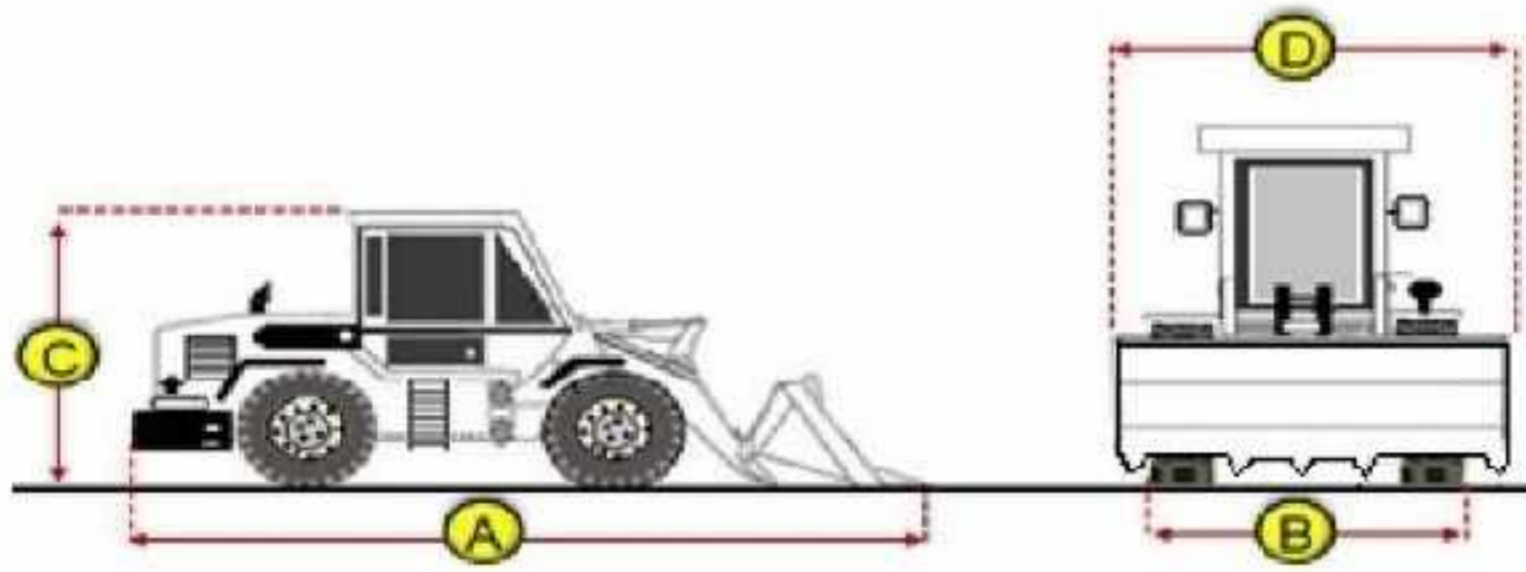
Dimensions

Measurement Guide

A. Length (ft and inches)

B. Width (ft and inches)

C. Height (ft and inches)



D. Shipping Width (ft and inches)

Operational Weight (lbs)

Exterior Condition

Coupler Style

Wedge Lock

Coupler Brand

WBM 250

Coupler Width (Between bucket ears)

20.5"

Stick Width (Between bucket ears)

Pin Size

Center to Center of Bucket Pins

Excavator Boom Length

Loader Bucket Pin Height

Width Between Bucket Ears

Top Pin Size

Bottom Pin Size

Center to Center of Coupler Pins

Exterior Walkaround Photos



Coupler Photos



Hard Bar Photos



Close-up Exterior Photos





Chassis Photos





Undercarriage Condition

Undercarriage Type

Tracks

Tire Size

Tire Brand

Front Left Tire - Ratio Remaining

Rear Left Tire - Ratio Remaining

Front Right Tire - Ratio Remaining

Rear Right Tire - Ratio Remaining

Wheel and Tire Condition

Left Track - Ratio Remaining

70%

Right Track - Ratio Remaining

70%

Track Condition

Good condition, low wear

Pad Width Instructions

Take photo of tape measure on pad/grousers

Front Left Tire - Photos

Rear Left Tire - Photos

Front Right Tire - Photos

Rear Right Tire - Photos

Left Track - Photos





Right Track - Photos



Pad Width Photo



Interior Condition

Interior Condition





Engine Condition

Engine Info

Gather general engine information if available (i.e., Make, Model, Cylinders, type, Horsepower).

Emissions Tier

Engine Serial Number

Unusual Noises (Upon Start-up, Idle, Shutdown)

No

Engine Exhaust Color

Clear

Engine Type (Make, Model, Cylinders, HP)

B-ACT

Blow-by (Visual Observation Check)

No

Engine Smoke (Upon Start-up, Idle, Shutdown)

No

Engine Compartment Photos





Active Engine Codes

A/C Compressor

Engine Data Plate



EPA Label



Hydraulic System

Hydraulic Pumps / Motors Condition

Hydraulic pumps & motors are dry and in good condition

Hydraulic Lines/Fittings Condition

Hydraulic Lines & Fittings are clean and in good condition

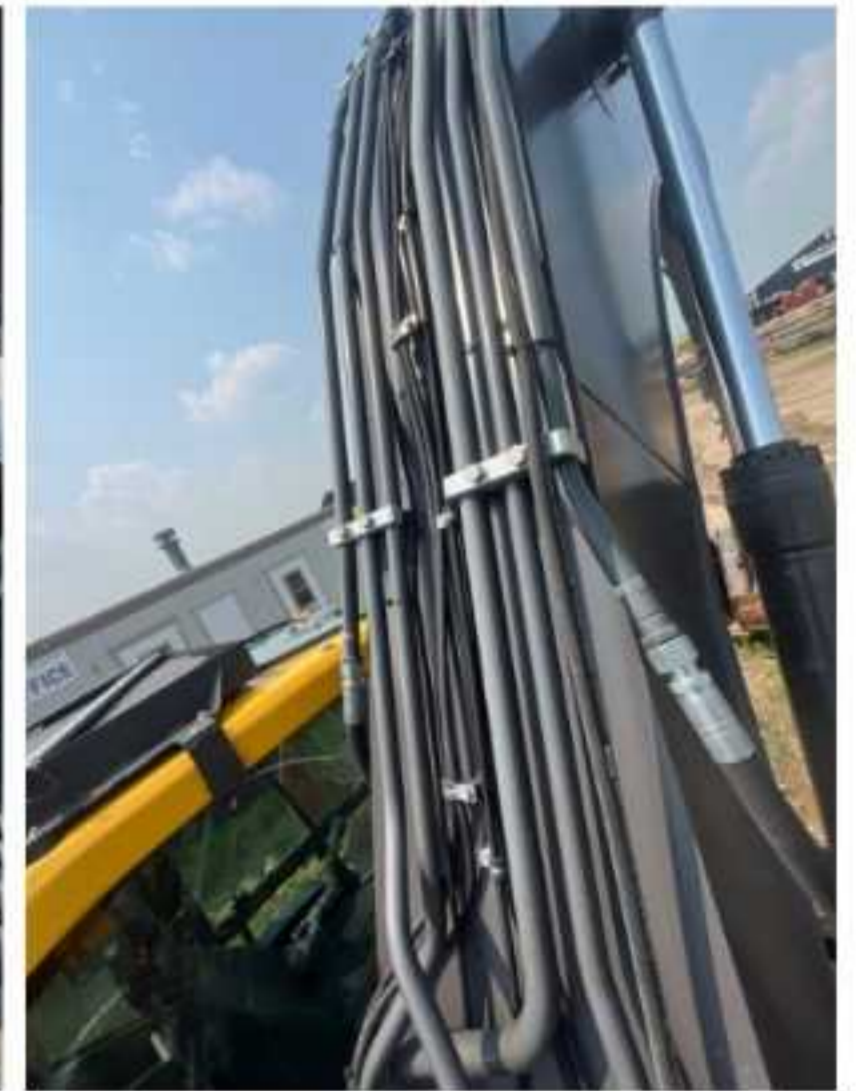
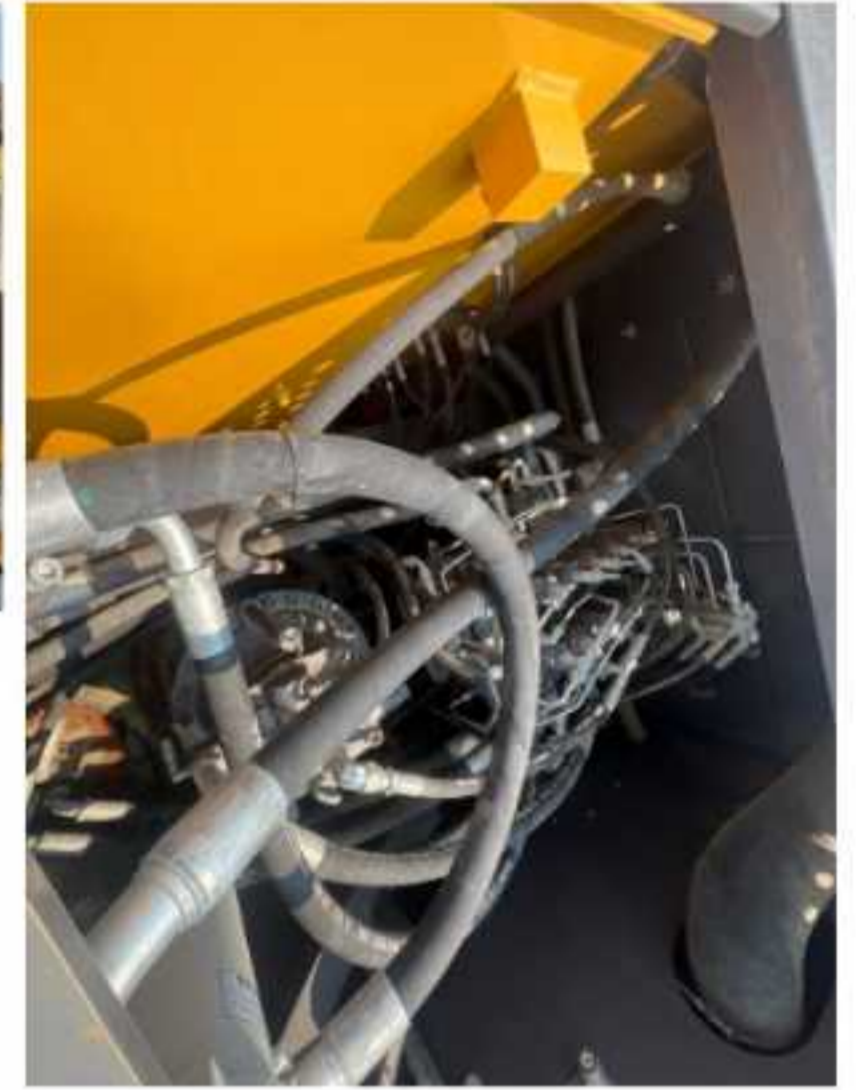
Hydraulic Cylinders Condition

Hydraulic cylinders are clean and in good condition

Hydraulic Cylinder Photos



Hydraulic System Photos



Hydraulic Leaks Photos

Hydrostatic Transmission?

2 Speed?

Yes

Drive

N/A

Transmission Condition

Axle Condition

Parking Brake Function

Drivetrain Photos

Function Check

Hydraulic Operation

5

Service Brakes Operation

5

Electronics Operation

5

Forward / Reverse

5

Attachment Operation

5

Park Brake Operation

5

Attachments

Attachment Type

68" clean up bucket

Attachment Make

AMI

Attachment Size / Specs

68"

Attachment Serial Number

192410-04-03

Attachment Photos



Attachment Serial Number Photo



Attachment Width Photo

