

General Equipment Info

Year

Make

Deere

Model

624K

Hours

8,466

Serial Number

1DW624KPCBD639359

Machine Options

Cab, A/C, Heat, Quick Coupler, Forks, Cleanup Bucket, Aux. Hydraulics, 4WD, Ride Control

Address

City

Moosejaw

Province/State

Sk

Inspector Name

Ryan

Date of Inspection

06-12-2024

Hour Meter - Idle Hours

Serial Number Plate



Hour Meter - SMU Hours



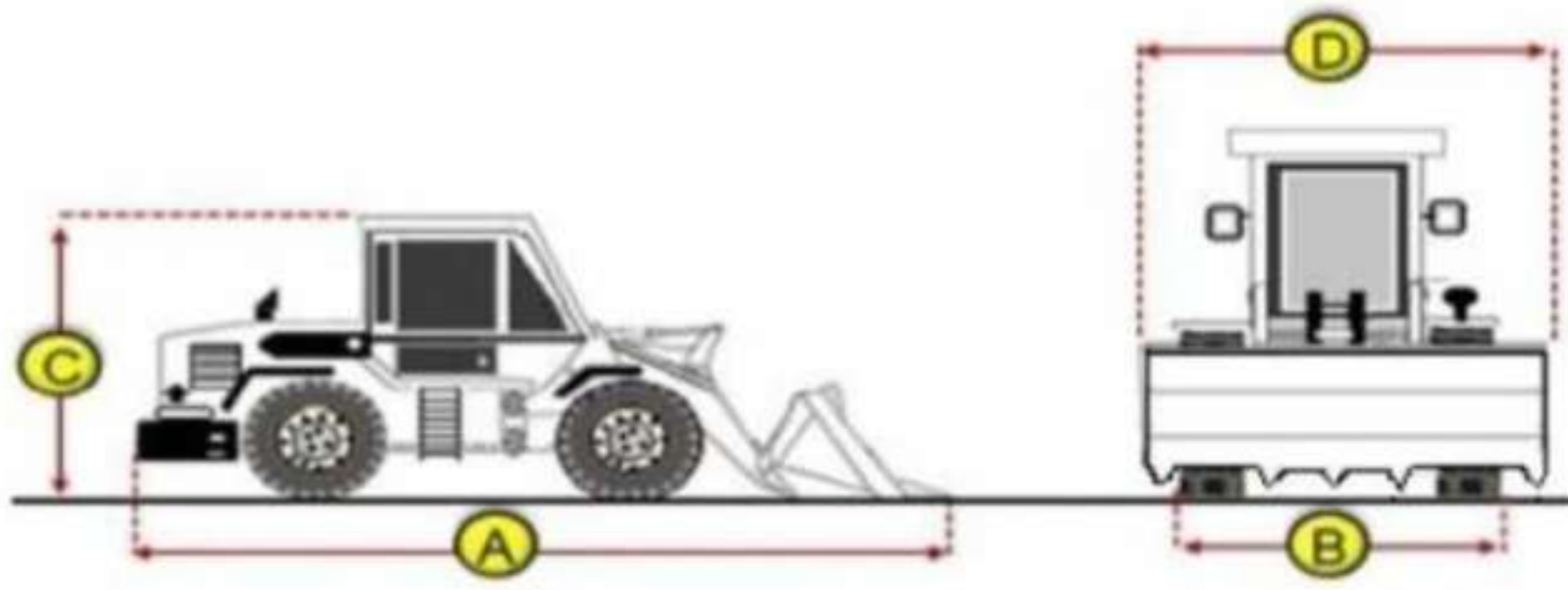
Dimensions

Measurement Guide

A. Length (ft and inches)

B. Width (ft and inches)

C. Height (ft and inches)



D. Shipping Width (ft and inches)

Operational Weight (lbs)

Exterior Condition

Coupler Style

Loader

Coupler Brand

JRB

Coupler Width (Between bucket ears)

Stick Width (Between bucket ears)

Pin Size

Center to Center of Bucket Pins

Excavator Boom Length

Loader Bucket Pin Height

Width Between Bucket Ears

Top Pin Size

Bottom Pin Size

Center to Center of Coupler Pins

Exterior Walkaround Photos





Coupler Photos



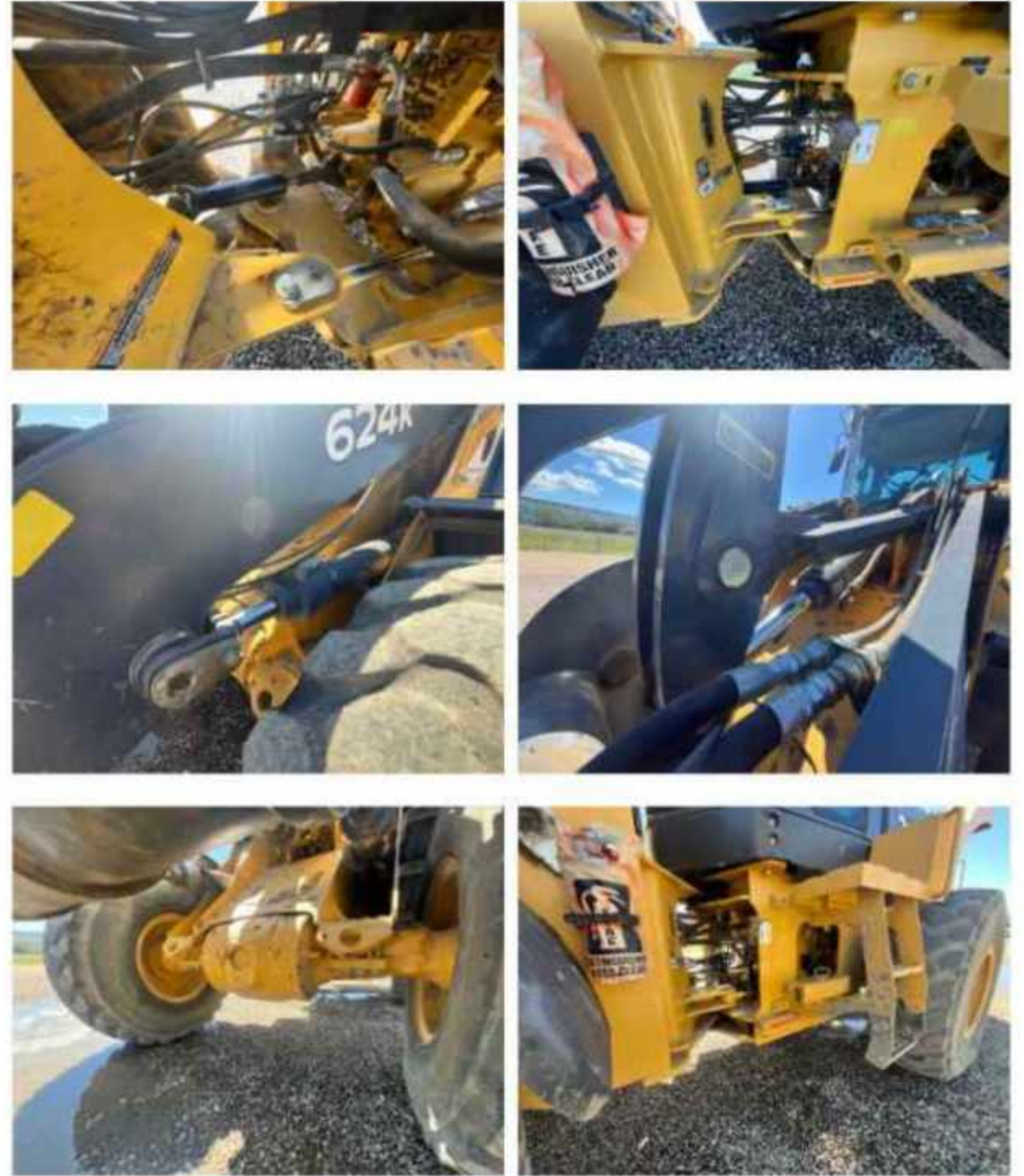
Hard Bar Photos

Close-up Exterior Photos





Chassis Photos



Undercarriage Condition

Undercarriage Type

Wheels

Tire Size

20.5 R 25

Tire Brand

Michelin

Front Left Tire - Ratio Remaining

30%

Rear Left Tire - Ratio Remaining

30%

Front Right Tire - Ratio Remaining

30%

Rear Right Tire - Ratio Remaining

30%

Wheel and Tire Condition

Good condition but low tread

Left Track - Ratio Remaining

Front Left Tire - Photos



Rear Left Tire - Photos

Right Track - Ratio Remaining

Track Condition

Pad Width Instructions

Take photo of tape measure on pad/grousers



Front Right Tire - Photos



Rear Right Tire - Photos



Left Track - Photos

Right Track - Photos

Pad Width Photo

Interior Condition

Interior Condition





Engine Condition

Engine Info

Gather general engine information if available (i.e., Make, Model, Cylinders, type, Horsepower).

Emissions Tier

Engine Serial Number

Unusual Noises (Upon Start-up, Idle, Shutdown)

Engine Compartment Photos

Active Engine Codes

A/C Compressor

Engine Data Plate

No
Engine Exhaust Color

Clear

Engine Type (Make, Model, Cylinders, HP)

Deere

Blow-by (Visual Observation Check)

No

Engine Smoke (Upon Start-up, Idle, Shutdown)

No



EPA Label



Hydraulic System

Hydraulic Pumps / Motors Condition

Hydraulic pumps & motors are dry and in good condition

Hydraulic Lines/Fittings Condition

Hydraulic Lines & Fittings are clean and in good condition

Hydraulic Cylinders Condition

Hydraulic cylinders are clean and in good condition

Hydraulic Cylinder Photos



Hydraulic System Photos

Hydraulic Leaks Photos

Drivetrain

Hydrostatic Transmission?

2 Speed?

Yes

Drive

4WD

Drivetrain Photos

Transmission Condition

Good forward and reverse function

Axle Condition

No leaks, unusual noises or vibrations

Parking Brake Function

Strong, holds machine

Function Check

Hydraulic Operation

5

Service Brakes Operation

5

Electronics Operation

5

Forward / Reverse

5

Attachment Operation

5

Park Brake Operation

5

Attachments

Attachment Type

Smooth bucket

Attachment Make

Deere

Attachment Size / Specs

Attachment Serial Number

Attachment Photos





Attachment Serial Number Photo



Attachment Width Photo

