

## General Equipment Info

**Year**

**Make**

Cat

**Model**

335FLCR

**Hours**

5,475

**Serial Number**

CAT0335FESGJ20665

**Machine Options**

Cab, Heat, A/C, Aux. Hydraulics

**Address**

Nisku yard

**City**

Nisku

**Province/State**

AB

**Inspector Name**

Adam Dow

**Date of Inspection**

03-14-2024

**Hour Meter - Idle Hours**

**Serial Number Plate**

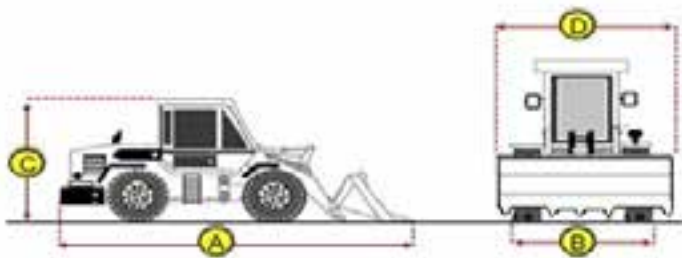


**Hour Meter - SMU Hours**



## Dimensions

### Measurement Guide



**A. Length (ft and inches)**

**B. Width (ft and inches)**

11' 4"

**C. Height (ft and inches)**

12' 4"

**D. Shipping Width (ft and inches)**

11' 4"

**Operational Weight (lbs)**

## Exterior Condition

### Coupler Style

Pin Grabber

### Exterior Walkaround Photos

**Coupler Brand**

Cat

**Coupler Width (Between bucket ears)**

**Stick Width (Between bucket ears)**

16 3/4"

**Pin Size**

3 1/2"

**Center to Center of Bucket Pins**

19"

**Excavator Boom Length**

**Loader Bucket Pin Height**

**Width Between Bucket Ears**

**Top Pin Size**

**Bottom Pin Size**

**Center to Center of Coupler Pins**



**Coupler Photos**



**Hard Bar Photos**

**Close-up Exterior Photos**





**Chassis Photos**





The image could not be loaded



## Undercarriage Condition

### Undercarriage Type

Tracks

### Tire Size

### Tire Brand

### Front Left Tire - Ratio Remaining

### Rear Left Tire - Ratio Remaining

### Front Right Tire - Ratio Remaining

### Rear Right Tire - Ratio Remaining

### Wheel and Tire Condition

### Left Track - Ratio Remaining

70%

### Right Track - Ratio Remaining

70%

### Track Condition

Good condition, wear consistent with hours

### Pad Width Instructions

Take photo of tape measure on pad/grousers

### Front Left Tire - Photos

### Rear Left Tire - Photos

### Front Right Tire - Photos

### Rear Right Tire - Photos

### Left Track - Photos



Right Track - Photos



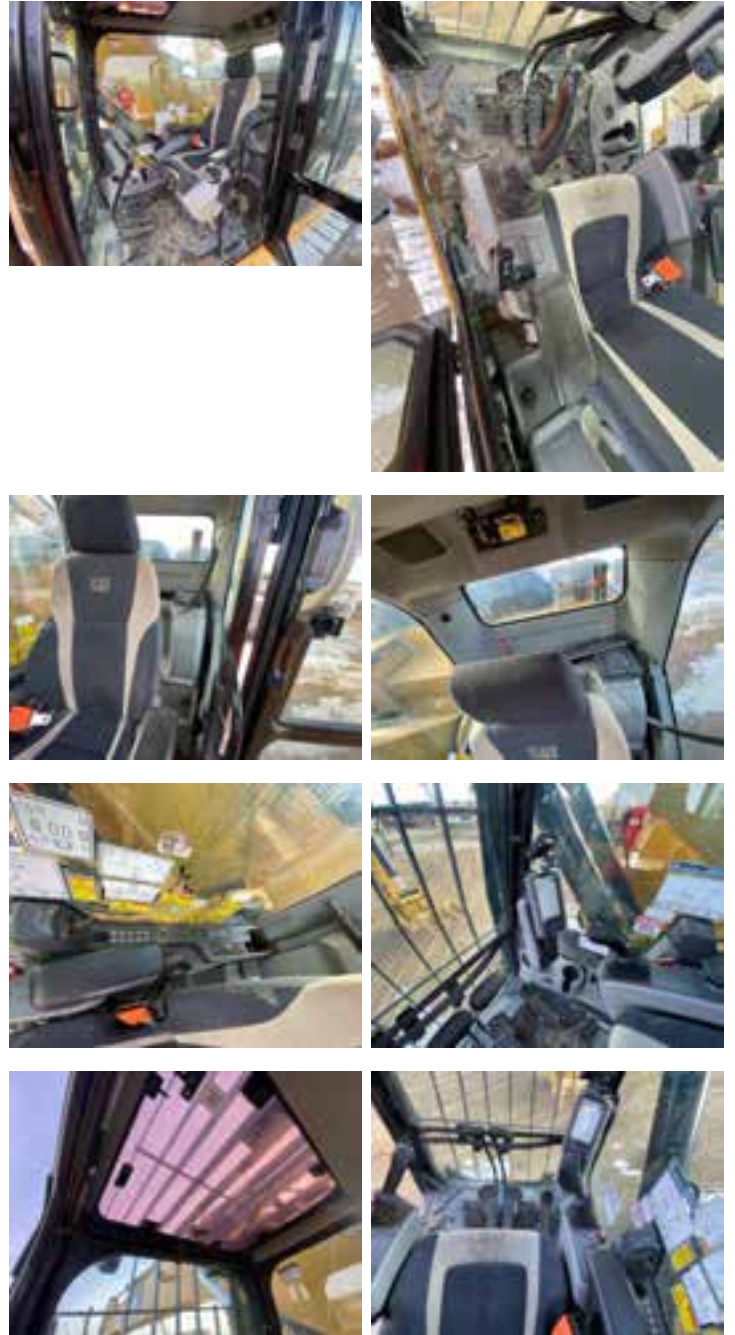


**Pad Width Photo**



## Interior Condition

Interior Condition



## Engine Condition

### Engine Info

Gather general engine information if available (i.e., Make, Model, Cylinders, type, Horsepower).

### Emissions Tier

### Engine Serial Number

### Unusual Noises (Upon Start-up, Idle, Shutdown)

### Engine Compartment Photos

No  
**Engine Exhaust Color**

Clear

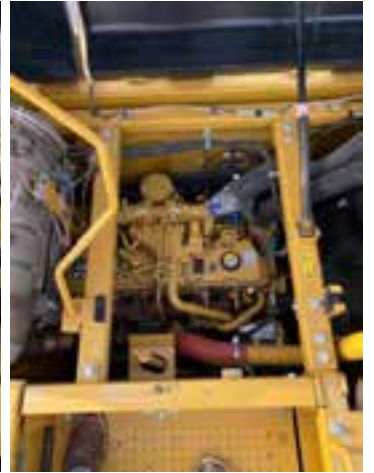
**Engine Type (Make, Model, Cylinders, HP)**

**Blow-by (Visual Observation Check)**

No

**Engine Smoke (Upon Start-up, Idle, Shutdown)**

No





**Active Engine Codes**

**A/C Compressor**

**Engine Data Plate**



EPA Label

## Hydraulic System

### Hydraulic Pumps / Motors Condition

Hydraulic pumps & motors are dry and in good condition

### Hydraulic Lines/Fittings Condition

Hydraulic Lines & Fittings are clean and in good condition

### Hydraulic Cylinders Condition

Hydraulic cylinders are clean and in good condition

### Hydraulic Cylinder Photos



**Hydraulic System Photos**







Hydraulic Leaks Photos

## Drivetrain

**Hydrostatic Transmission?**

Yes

**2 Speed?**

Yes

**Drive**

**Transmission Condition**

Good forward and reverse function

**Axle Condition**

No leaks, unusual noises or vibrations

**Parking Brake Function**

Strong, holds machine

**Drivetrain Photos**



## Function Check

**Hydraulic Operation**

N/A

**Service Brakes Operation**

N/A

**Electronics Operation**

N/A

**Forward / Reverse**

N/A

**Attachment Operation**

N/A

**Park Brake Operation**

N/A

## Attachments

**Attachment Type**

Thumb

**Attachment Make**

Cat

**Attachment Size / Specs**

74"x27"

**Attachment Serial Number**

**Attachment Photos**



**Attachment Serial Number Photo**



Attachment Width Photo

