

## General Equipment Info

**Year**

2020

**Make**

CAT

**Model**

335F LCR

**Hours**

3,969

**Serial Number**

CAT0335FLSGJ21067

**Machine Options**

Cab, Heat, A/C, Aux. Hydraulics, Backup Camera, Digging Bucket, Cleanup Bucket

**Address**

**City**

Nisku

**Province/State**

AB

**Inspector Name**

Adam Dow

**Date of Inspection**

03-14-2024

**Hour Meter - Idle Hours**

**Serial Number Plate**

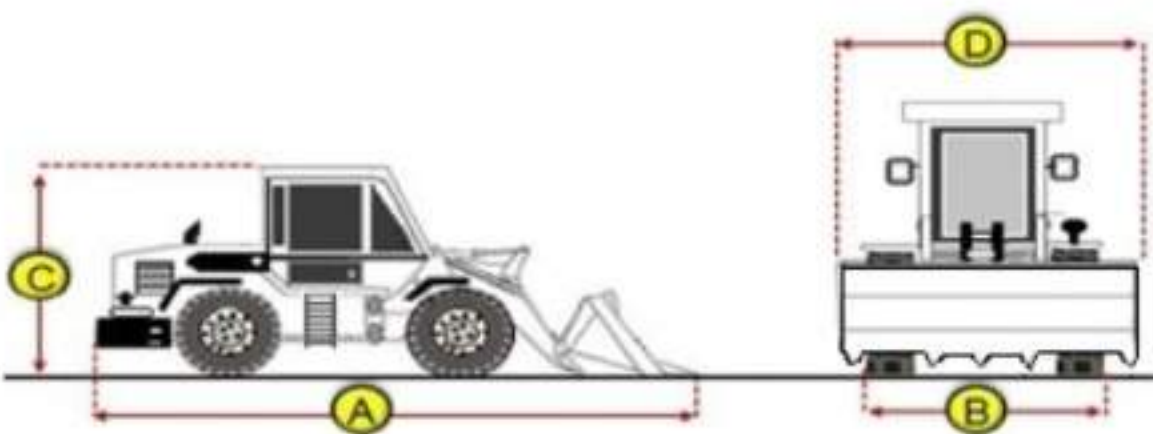


**Hour Meter - SMU Hours**



## Dimensions

### Measurement Guide



- A. Length (ft and inches)
- B. Width (ft and inches)
- C. Height (ft and inches)
- D. Shipping Width (ft and inches)
- Operational Weight (lbs)

## Exterior Condition

### Coupler Style

Pin Grabber

### Exterior Walkaround Photos

**Coupler Brand**

Cat

**Coupler Width (Between bucket ears)**

**Stick Width (Between bucket ears)**

16 1/2"

**Pin Size**

3 1/2"

**Center to Center of Bucket Pins**

19"

**Excavator Boom Length**

**Loader Bucket Pin Height**

**Width Between Bucket Ears**

**Top Pin Size**

**Bottom Pin Size**

**Center to Center of Coupler Pins**





**Coupler Photos**

**Hard Bar Photos**

**Close-up Exterior Photos**







**Chassis Photos**



## Undercarriage Condition



**Undercarriage Type**

Tracks

**Tire Size**

**Tire Brand**

**Front Left Tire - Ratio Remaining**

**Rear Left Tire - Ratio Remaining**

**Front Right Tire - Ratio Remaining**

**Rear Right Tire - Ratio Remaining**

**Wheel and Tire Condition**

**Left Track - Ratio Remaining**

70%

**Right Track - Ratio Remaining**

70%

**Track Condition**

Good condition, wear consistent with hours

**Pad Width Instructions**

Take photo of tape measure on pad/grousers

**Front Left Tire - Photos**

**Rear Left Tire - Photos**

**Front Right Tire - Photos**

**Rear Right Tire - Photos**

**Left Track - Photos**



**Right Track - Photos**



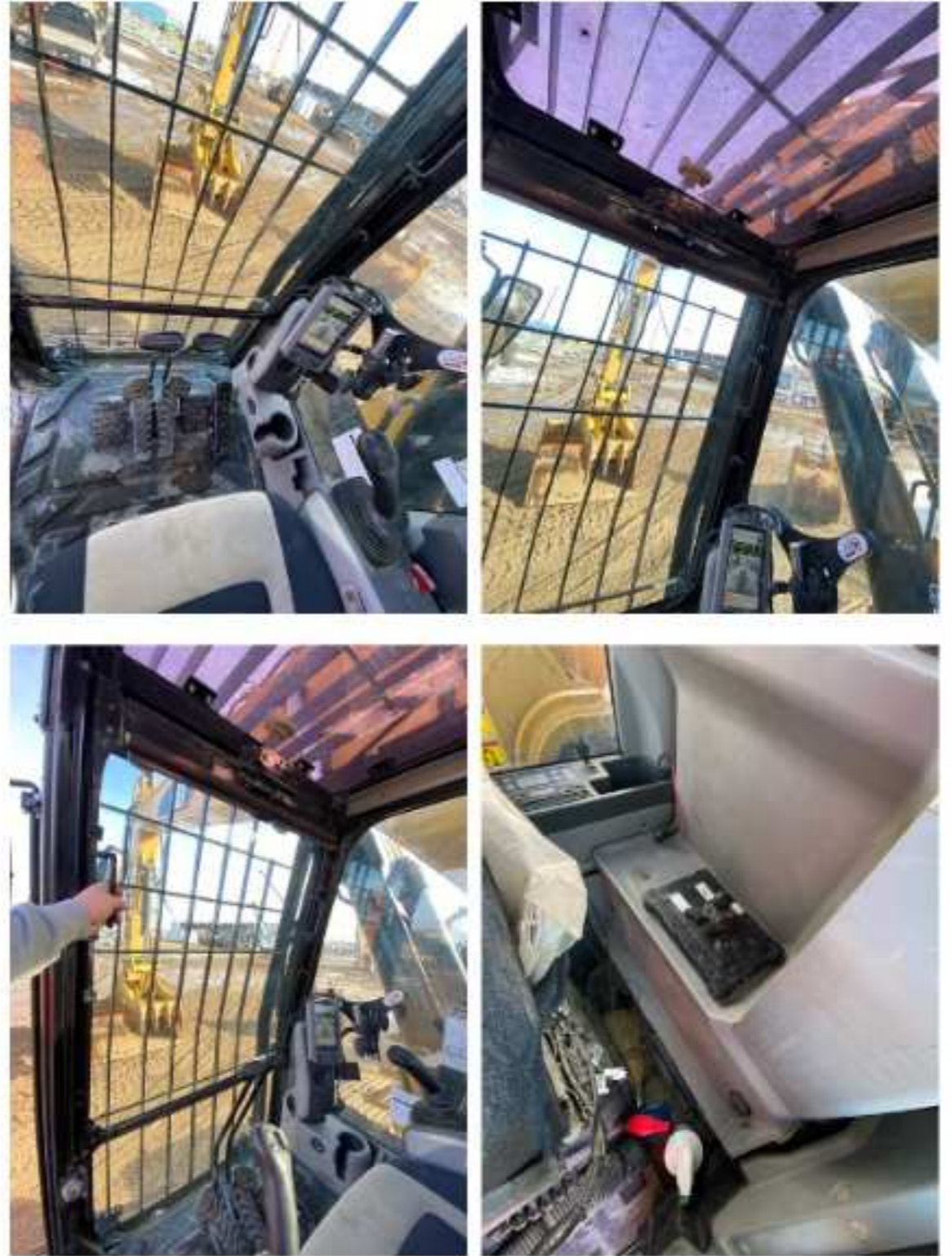
**Pad Width Photo**



## Interior Condition

Interior Condition





## Engine Condition

### Engine Info

Gather general engine information if available (i.e., Make, Model, Cylinders, type, Horsepower).

### Emissions Tier

### Engine Serial Number

### Unusual Noises (Upon Start-up, Idle, Shutdown)

No

### Engine Exhaust Color

Clear

### Engine Type (Make, Model, Cylinders, HP)

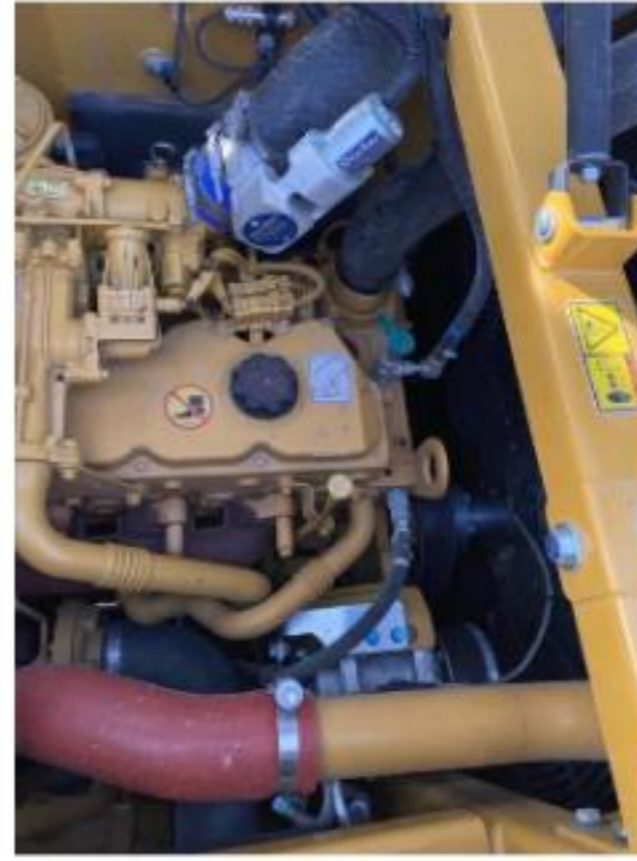
### Blow-by (Visual Observation Check)

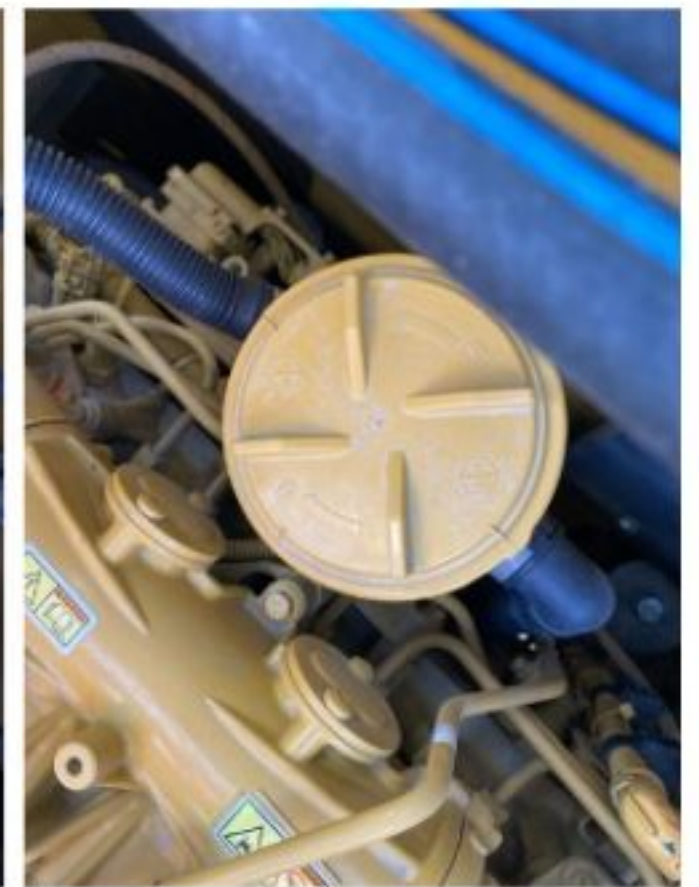
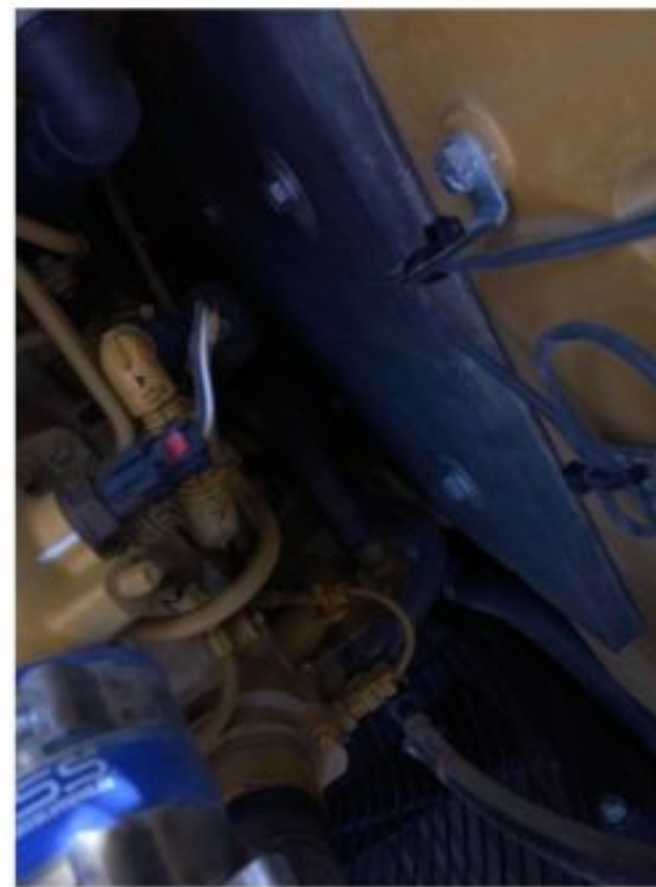
No

### Engine Smoke (Upon Start-up, Idle, Shutdown)

No

### Engine Compartment Photos





**Active Engine Codes**

**A/C Compressor**

**Engine Data Plate**



**EPA Label**

## Hydraulic System

### Hydraulic Pumps / Motors Condition

Hydraulic pumps & motors are dry and in good condition

### Hydraulic Lines/Fittings Condition

Hydraulic Lines & Fittings are clean and in good condition

### Hydraulic Cylinders Condition

Hydraulic cylinders are clean and in good condition

### Hydraulic Cylinder Photos





**Hydraulic System Photos**





Hydraulic Leaks Photos

## Drivetrain

**Hydrostatic Transmission?**

Yes

**2 Speed?**

Yes

**Drive**

**Transmission Condition**

Good forward and reverse function

**Axle Condition**

No leaks, unusual noises or vibrations

**Parking Brake Function**

Strong, holds machine

**Drivetrain Photos**



## Function Check

**Hydraulic Operation**

N/A

**Service Brakes Operation**

N/A

**Electronics Operation**

N/A

**Forward / Reverse**

N/A

**Attachment Operation**

N/A

**Park Brake Operation**

N/A

## Attachments

**Attachment Type**

Thumd

**Attachment Make**

Cat

**Attachment Size / Specs**

27"

**Attachment Serial Number**

**Attachment Photos**





**Attachment Serial Number Photo**



**Attachment Width Photo**

